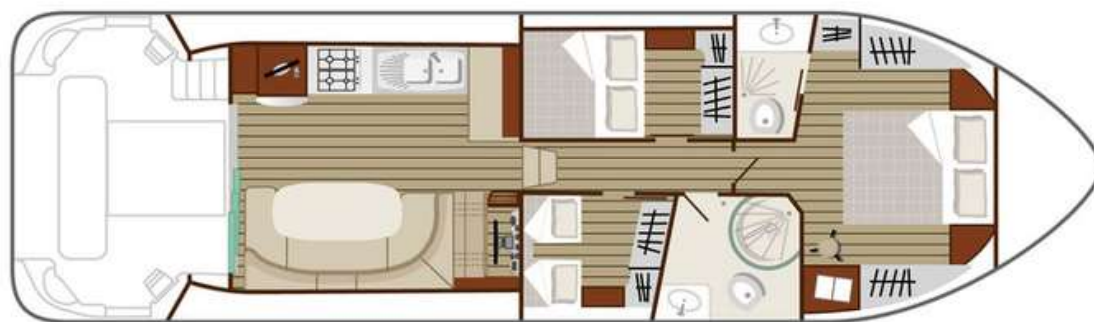




Nicols Sixto



Are you ready to live your stay in fresh water on the banks of the Anjou ?

Let's prepare your cruise together !

Onboard inventory

Indoor and outdoor :

Complete bedding : sheets ; duvet ; blanket ; pillows

Dishes for the crew : table service for 8 people (plates [flat, soup, dessert] ; cutlery ; glasses ; cups ; bowls ; ...)

Chef's ustensils : 1 paring knife ; 1 lemonade knife ; 1 bread knife ; 1 paring knife ; 1 butcher knife ; 2 wooden spatulas ; set of ustensils ; 1 whip ; 1 can opener ; 1 universal grater ; 1 salad server

Small dishes at your disposal : 1 set of salad bowls ; 2 ravines ; 1 set of dishes ; 1 set of pans ; 1 set of stoves ; stainless steel lids ; 1 cooking pot (8L)

Other : 1 trivet ; 1 colander ; 1 cutting board ; 1 bread basket ; 1 cutlery basket ; 1 dish drainer ; 1 tray ; 1 salad spinner

For the drink : decanter ; kettle ; coffee maker ; tea strainer ; ice cube trays.

To have a good time outdoors : integrated basin and bench

Safety on board :

Safety / rescue equipment : buoy ; adult bras ; fire extinguishers ; cattail ; mooring stakes ; aid kit

The boat equipment : blunder ; bucket ; anchor chain ; ropes

Household chores

For house fairies : trash ; broom ; mop ; brush ; dust shovel ; necessary W.C. ; dishwashing liquid ; multi-surface liquid ; sponge ; roll of toilet paper



Nicols Sixto



Practical information



The little things to remember :

- Cloths with which to wipe my dishes ;
- Extra toilet paper if necessary ;
- My toiletries (tower/shower gel...);
- Food, it digs navigation ! (Shops and restaurants on the way).



Don't forget that you are on the water !
Only provide biodegradable products.



What time is the departure ?

- Weekend : 4 pm
- Short week / week: 2 pm

The times indicated are given for information only: we strongly advise you to contact us to agree on an arrival time ! We adapt to you !

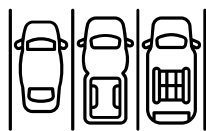
02.43.95.14.42

contact@anjou-navigation.fr

Few propositions :



Bike



Parking



Barbecue

Week

40€

40€

40€

Weekend

20€

20€

20€

Short week

26€

26€

26€



Wifi onboard with 3G



Pet



Deck mattress



Towel kit



Cleaning package

The unit

50€

40€

10€

10€

200€



Nicols Sixto



To know even more



02.43.95.14.42

You can always contact us at :



contact@anjou-navigation.fr



anjou-navigation.fr

Or on our website :

You will find various information that may be useful to you before setting sail, such as :



- Route suggestions

They can inspire you to organize your trip.

On our route proposals you will find activities, museums, visits, ...which will be on your route, remember to book if you are interested.

- A FAQ

It's available ; if you have any questions maybe you will find answers there. Or you can always contact us directly as we remain at your disposal to help you.



- An initiation to navigation

It's available with explanations and videos are present on our site, to help you familiarize yourself with navigation, after having answered the quiz it will no longer have any secrets for you.





Nicols Sixto



To find us the access maps



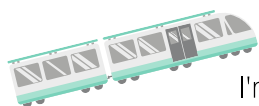
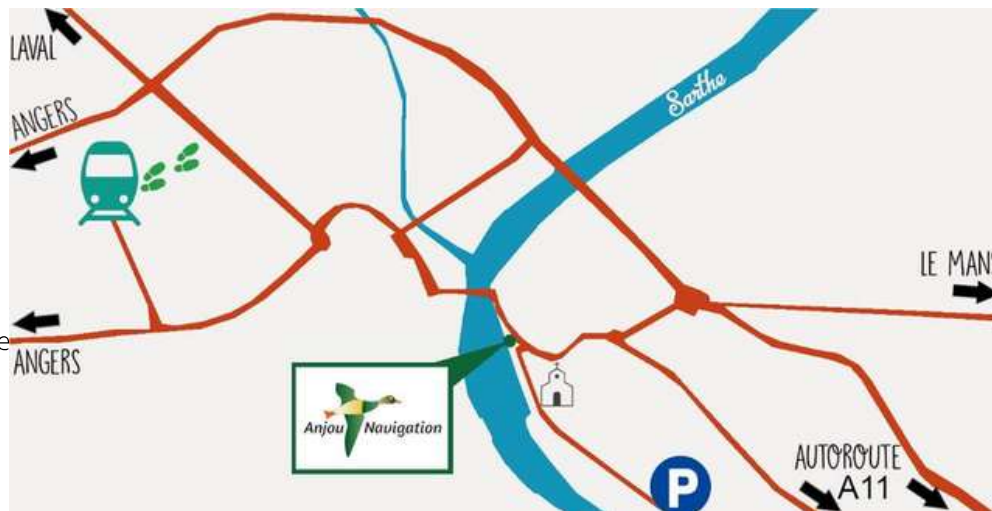
Base of Sablé-sur-Sarthe

GPS data :

47,8387830
-0,3309447

Address :

2 Quai national
72300 Sablé sur Sarthe



I'm coming by train :

I'm walking to the harbor master's office (1km/12min)

OR I book a taxi : **02.43.95.05.43**

I'm coming by car :



I come to unload my luggage at the harbor master's office. Then I park in the designated public car parks.

OR I request a private parking space.

Base of Grez Neuville

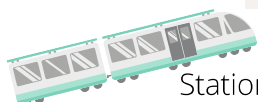


GPS data :

47,6029924
-0,6868383

Address :

1 Quai de l'hirondelle
49220 Grez Neuville



I'm coming by train :

Station of Angers Saint-Laud
25km

OR I book a taxi : **02.41.95.70.70**

I'm coming by car :



I come to unload my luggage at the harbor master's office. Then I park in the designated public car parks.

OR I request a private parking space.